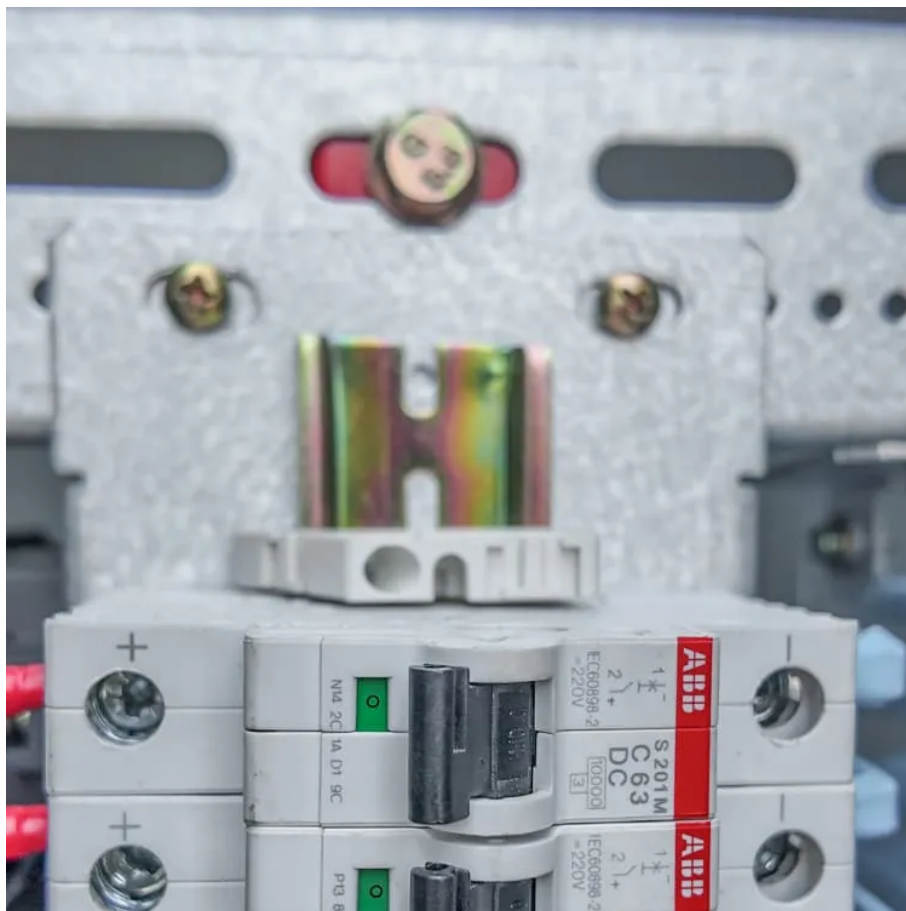


# What is a power station in Chile





## Overview

---

Which power stations are listed in Chile?

The following page lists some of the power stations in Chile. The listed plants include: - Pangué Hydroelectric Plant (-37.910448; -71.611419) - Ralco Hydroelectric Plant (37.99583°S 71.51667°W) - Rapel Hydroelectric Plant (34.04139°S 71.58861°W).

What is the national electric system of Chile?

The National Electric System of Chile, includes the installations for electrical generation, transmission and consumption encompassing the territory from the regions of Arica - Parinacota (North) to the Tenth Region (Isla Grande de Chiloé, South).

Why is Chile a big importer of energy?

A significant portion of this growth has come from increased power demand by the mining sector, the country's single largest industry, and by large urban areas such as Santiago, which alone contains almost 40% of Chile's population. The increased demand combined with scant fossil fuel resources make Chile a net importer of energy.

Why is energy demand increasing in Chile?

Chilean energy demand has been growing rapidly (averaging more than 7% annually) since 1992. A significant portion of this growth has come from increased power demand by the mining sector, the country's single largest industry, and by large urban areas such as Santiago, which alone contains almost 40% of Chile's population.



## What is a power station in Chile

---



### [National Energy Grid of Chile](#)

A significant portion of this growth has come from increased power demand by the mining sector, the country's single largest industry, and by large urban areas such as Santiago, which alone contains almost 40% ...

[Free Quote](#)

## Contact Us

---

For catalog requests, pricing, or partnerships, please visit:  
<https://www.getonco.co.za>

### Scan QR Code for More Information





<https://www.getonco.co.za>