

What is the charging current of 280ah solar container battery





Overview

What is the maximum charge current for a 280ah Eve cell?

If we use a larger battery cell, the 280Ah EVE cell for example, we can see that the recommended max charge current is 1C. Let's calculate the recommended charge current for this cell: $280\text{Ah} * 1\text{C} = 280\text{Amps}$ We see that the c-rate is double. This is because the cell is much larger and can dissipate heat better.

How do I charge a 12V 280ah lithium battery?

The EcoWorthy 12V 280Ah lithium battery performs best with a charging voltage of 14.4–14.6V (absorption phase) and 13.6V (float). Use a lithium-specific charger with temperature compensation. Avoid exceeding 0.5C (140A) charge current to preserve longevity. Ideal operating temperatures range from 32°F–113°F (0°C–45°C).

What is the maximum charge current for a 48V 100Ah battery?

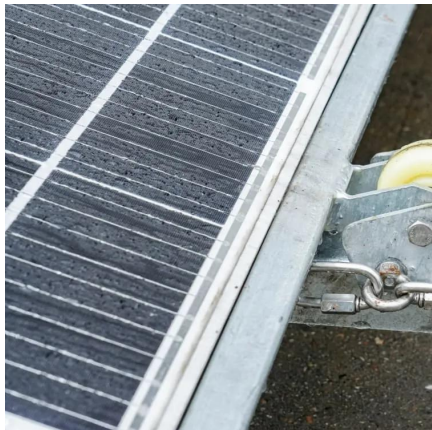
Now if you have a 48V 100Ah battery (5kw server rack) the charge current is the following: $100\text{Ah} * 0.5\text{C} = 50\text{ Amps}$ We can see that the maximum recommended charge current depends on the battery capacity (Ah), not the voltage. If we use a larger battery cell, the 280Ah EVE cell for example, we can see that the recommended max charge current is 1C.

What is the maximum charge current for a 12V 200Ah battery?

If you have a 12V 200Ah battery, the maximum charge current is as follows: $200\text{Ah} * 0.5\text{C} = 100\text{ Amps}$ Now if you have a 48V 100Ah battery (5kw server rack) the charge current is the following: $100\text{Ah} * 0.5\text{C} = 50\text{ Amps}$ We can see that the maximum recommended charge current depends on the battery capacity (Ah), not the voltage.



What is the charging current of 280ah solar container battery



[What amp should I charge my LiFePO4 ...](#)

If we use a larger battery cell, the 280Ah EVE cell for example, we can see that the recommended max charge current is 1C. 280Ah lithium battery cell with product datasheet for recommended ...

[Free Quote](#)

What Are the Optimal Charging Settings for the EcoWorthy 12V 280Ah

The EcoWorthy 12V 280Ah lithium battery performs best with a charging voltage of 14.4-14.6V (absorption phase) and 13.6V (float). Use a lithium-specific charger with ...

[Free Quote](#)



[proper charging parameters for LiFePO4](#)

I have a 280Ah LiFePO4 battery. The voltage vs charge level data from the manufacturer is as follows. Battery Voltage & Actual Capacity 13.6V 100% 13.4V 99% 13.3V ...

[Free Quote](#)



[Power Wall 280Ah 15kWh LiFePO4 Battery \(Solar H](#)

Shenzhen Boyada (Chain Powers) Technology Co., Ltd. Solar Storage System Series Power Wall 280Ah 15kWh LiFePO4 Battery (Solar Home Power Storage). Detailed profile including ...



[Free Quote](#)



[Sunark Lithium Batteries 280ah 768v 215kwh Solar Container...](#)

Other attributes Model Number RackArk Brand Name SunArk Place of Origin Anhui, China Dimension (L*W*H) 1545*800*1800MM Weight 2.2-2.4T Communication Port RS485, CAN ...

[Free Quote](#)



[Lithium-ion power battery 280Ah](#)

1)Test temperature: $25 \pm 2^\circ$. 2)Fully charge the battery according to 3.17. 3)Discharge the battery to 2.5V with 0.5I1(A) current and record the discharge capacity (Ah). ...

[Free Quote](#)



[Power Wall 280Ah 15kWh LiFePO4 Battery ...](#)

Shenzhen Boyada (Chain Powers) Technology Co., Ltd. Solar Storage System Series Power Wall 280Ah 15kWh LiFePO4 Battery (Solar Home Power Storage). Detailed profile including pictures and manufacturer PDF

[Free Quote](#)

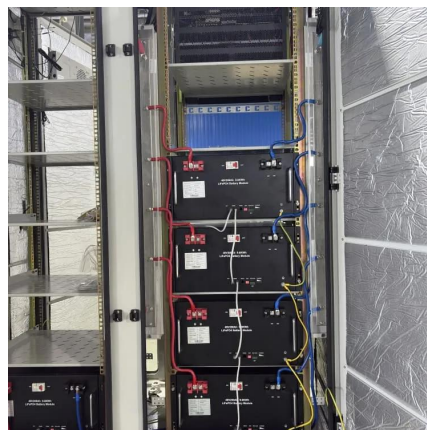




[SK12V280H . 280Ah Battery.Built-in heater and](#)

In stock, ready to ship.SOK 12V 280Ah lithium iron phosphate batteries.Aluminium box, best for RV or marine applications!Latest V8 version BMS,Bluetooth Function,self-heater pad built ...

[Free Quote](#)



[What amp should I charge my LiFePO4 battery?](#)

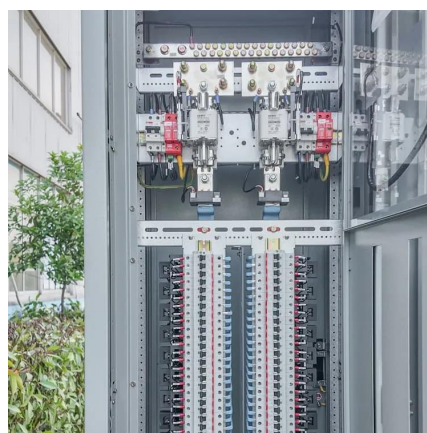
If we use a larger battery cell, the 280Ah EVE cell for example, we can see that the recommended max charge current is 1C. 280Ah lithium battery cell with product datasheet for ...

[Free Quote](#)

[SK12V280H . 280Ah Battery.Built-in heater...](#)

In stock, ready to ship.SOK 12V 280Ah lithium iron phosphate batteries.Aluminium box, best for RV or marine applications!Latest V8 version BMS,Bluetooth Function,self-heater pad built-in arge current ...

[Free Quote](#)



Contact Us

For catalog requests, pricing, or partnerships, please visit:
<https://www.getonco.co.za>



Scan QR Code for More Information



<https://www.getonco.co.za>