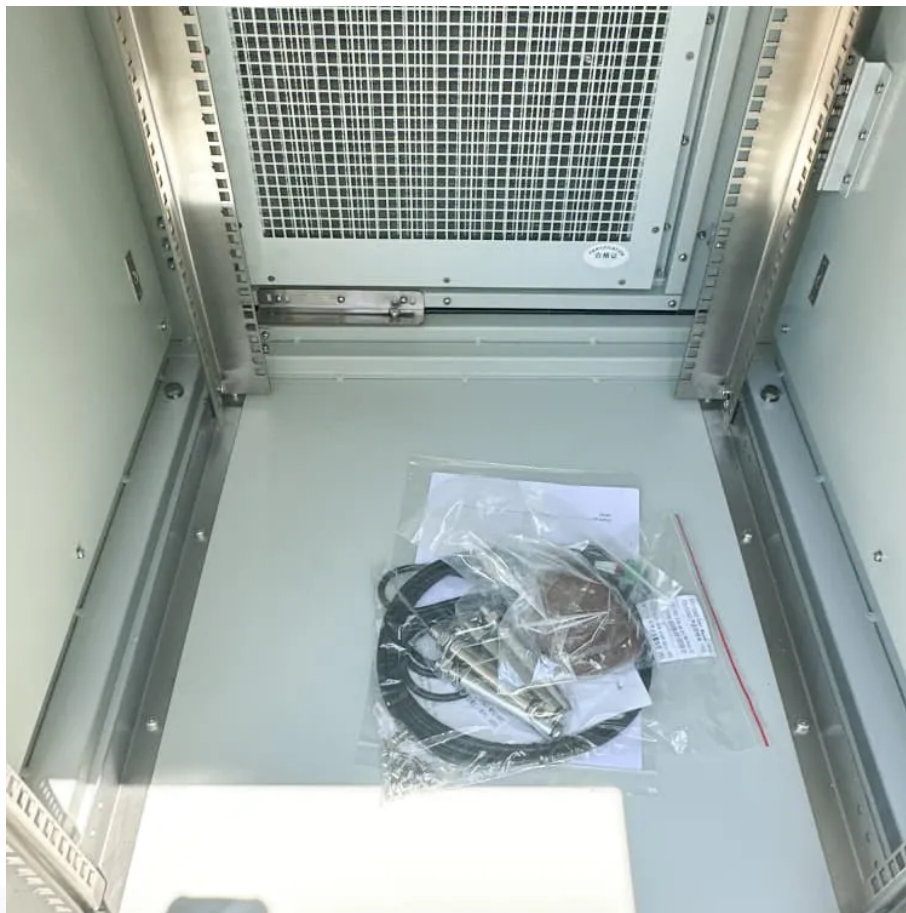


What is the controllable range of a 12V inverter





Overview

What is a 12V DC power inverter?

This is where a power inverter comes in. Definition and Working Principle A 12V DC power inverter is a device that converts low-voltage direct current (DC) power from a 12V battery (such as a car battery or deep-cycle battery) into 120V alternating current (AC) power, making it suitable for household appliances and electronic devices.

What type of power does a power inverter use?

In many off-grid or mobile power scenarios, standard household appliances require AC (alternating current) power, but most batteries and vehicle power systems provide DC (direct current) power at 12 volts. This is where a power inverter comes in. Definition and Working Principle.

Are 12V inverters commonly used in RVs and solar power systems?

Yes, 12V inverters are commonly used in RVs and solar power systems. When choosing an inverter for these setups, ensure that it is compatible with your battery bank and solar panel capacity. This ensures your system runs efficiently and can handle the load of various devices without issues.

How much power does an inverter need?

It's important to note what this means: In order for an inverter to put out the rated amount of power, it will need to have a power input that exceeds the output. For example, an inverter with a rated output power of 5,000 W and a peak efficiency of 95% requires an input power of 5,263 W to operate at full power.



What is the controllable range of a 12V inverter



[What Is A Solar Inverter 12 Volt?](#)

A 12V inverter's input range (10-15V) ensures stable output even with battery voltage drops. Pro Tip: Pair with a 12V LiFePO4 battery for 2000+ cycles instead of lead-acid's ...

[Free Quote](#)

[A comprehensive guide to inverter voltage](#)

What is a 12VDC to 120VAC inverter? 12VDC to 120VAC Inverter is a common device that converts 12V DC power to AC power with a nominal output of 120V. 120 volts AC ...

[Free Quote](#)



[What Is A 12V Inverter And Where Is It Used?](#)

A 12V inverter is a device that converts 12V DC power from batteries or solar panels into 120V/230V AC electricity, enabling the use of household appliances in off-grid or mobile ...

[Free Quote](#)



[How to Choose the Right Inverter Size for Solar Battery](#)

Discover how to choose the right inverter size for your home, calculate inverter capacity accurately, and avoid common mistakes to ensure efficient solar power performance.



[Free Quote](#)

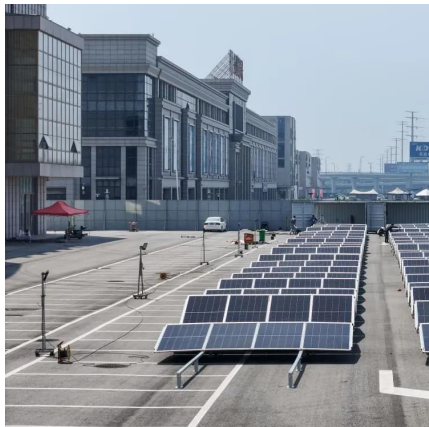


[How to Use SOLAR INVERTER CHARGE:](#)

...

The SOLAR INVERTER CHARGE (Manufacturer Part ID: POW-HVM2H-12V-N) is a versatile solar inverter charge controller designed to convert direct current (DC) electricity generated by solar panels into alternating ...

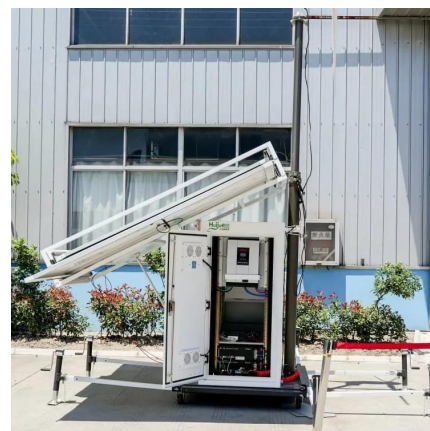
[Free Quote](#)



[12 Volt DC Power Inverter: In-Depth Learning and Buying ...](#)

A 12-volt DC power inverter is an essential device for converting 12V direct current (DC) from a battery into 120V alternating current (AC), allowing you to power standard ...

[Free Quote](#)



[A comprehensive guide to inverter voltage](#)

What is a 12VDC to 120VAC inverter? 12VDC to 120VAC Inverter is a common device that converts 12V DC power to AC power with a nominal output of 120V. 120 volts AC is the standard household voltage in ...

[Free Quote](#)





[How to Use SOLAR INVERTER CHARGE: Examples, Pinouts, ...](#)

The SOLAR INVERTER CHARGE (Manufacturer Part ID: POW-HVM2H-12V-N) is a versatile solar inverter charge controller designed to convert direct current (DC) electricity generated by ...

[Free Quote](#)



[How efficient is a 12V DC to 120V AC inverter?](#)

Whether for domestic or commercial use, efficient 12V to 120V inverters provide a reliable and efficient power solution. By maximizing energy efficiency and minimizing energy ...

[Free Quote](#)

[Inverter Specifications and Data Sheet](#)

The article provides an overview of inverter functions, key specifications, and common features found in inverter systems, along with an example of power calculations and inverter ...

[Free Quote](#)



[What is the "Battery operating range" on an inverter?](#)

The "Battery Operating Range" on an inverter refers to the range of battery voltages within which the inverter can function effectively. This range ensures that the inverter ...

[Free Quote](#)



[Inverter Battery Voltage: How Many Volts Are Needed For ...](#)

An inverter battery typically operates at 12V, 24V, or 48V. These voltages represent the nominal direct current (DC) needed for the inverter's function.

[Free Quote](#)



[Inverter Specifications and Data Sheet](#)

A 12-volt DC power inverter is an essential device for converting 12V direct current (DC) from a battery into 120V alternating current (AC), allowing you to power standard household appliances on ...

[Free Quote](#)

[How efficient is a 12V DC to 120V AC ...](#)

Whether for domestic or commercial use, efficient 12V to 120V inverters provide a reliable and efficient power solution. By maximizing energy efficiency and minimizing energy waste, inverters play an ...

[Free Quote](#)



Contact Us

For catalog requests, pricing, or partnerships, please visit:
<https://www.getonco.co.za>



Scan QR Code for More Information



<https://www.getonco.co.za>