

# **What is the voltage of a 2000w inverter**





## Overview

---

How much current does a 2000 watt inverter draw?

In general, if your 2000 Watt inverter is running on a 12V battery bank, it could draw as much as 240 Amps of current. If your battery bank is rated at 24 Volts, the 2000W inverter could draw up to 120 Amps of current. If the battery bank is rated at 48V, the amp draw would not exceed 60 Amps.

How many amps can a 2000 watt inverter pull?

Maximum Amp Draw (Amps) = 111.1 Amps Now that we know how much current a 2000W inverter is capable of pulling from the battery bank, we can use that to determine the size of wires and fuse or circuit breaker that we need. What gauge wire for 2000 watt inverter?

.

How much power does a 2000 watt inverter use?

In an emergency, a 2000 watt power inverter can sustain the necessities of your home during a power outage. Example: TVs and Entertainment Systems: Most of the flat-screen TVs available today generally consume between 50 and 400 watts of power, which depends on its size and the technology used.

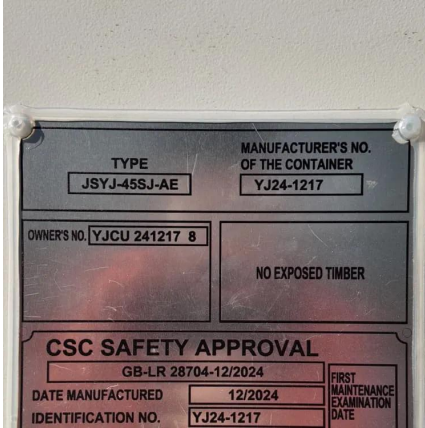
How many amps does a 12V 2000W inverter draw?

A 12V 2000W inverter running at maximum load draws 166.6 amps an hour. Divide the watts consumed per hour by the voltage and you get the amps. In this example, 2000 watts an hour divided by 12 volts equals 166.6 amps. The following calculations assume you have a high quality inverter that can draw maximum power.



## What is the voltage of a 2000w inverter

---



### [How many amps does a 2000 watt inverter draw](#)

So, in this example, the 2000W inverter could draw up to 58.8 Amps of current from the 40V battery bank when it is running at maximum output. Knowing the maximum amp draw ...

[Free Quote](#)

### [How Many Amps Does a 2000 Watt Inverter Draw? \(Answered\)](#)

But if you can't find any cable big enough to accommodate this current amount, the only option is to set the battery voltage cut-off point higher to limit the amperage draw. ...

[Free Quote](#)



### [How Many Amps Can I Get From A 2000W ...](#)

Therefore, a 2000W inverter operating at an output voltage of 120 volts may provide a maximum of 16.67 Amps of current. However, please note that the actual value of the current may vary depending on the power ...

[Free Quote](#)

### [How many amps does a 2000 watt inverter draw?](#)

Now that we know how much current a 2000W inverter is capable of pulling from the battery bank, we can use that to determine the size of wires and fuse or circuit breaker that ...



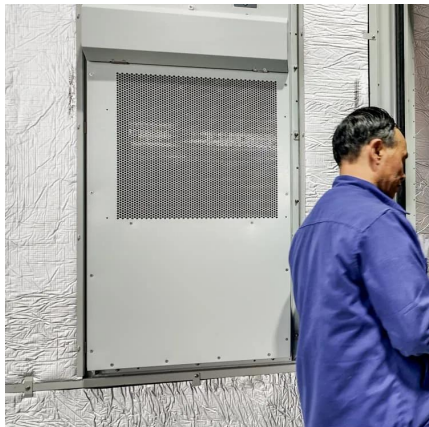
[Free Quote](#)



### [How Many Amps Does a 2000 Watt Inverter ...](#)

The maximum amps (current) drawn by a 2000 watts inverter depends on its conversion efficiency and voltage rating of the battery bank. A 2000-watt power inverter running on a battery bank of 12V would draw ...

[Free Quote](#)



### [How Many Amps Does a 2000 Watt Inverter Draw](#)

The maximum amps (current) drawn by a 2000 watts inverter depends on its conversion efficiency and voltage rating of the battery bank. A 2000-watt power inverter ...

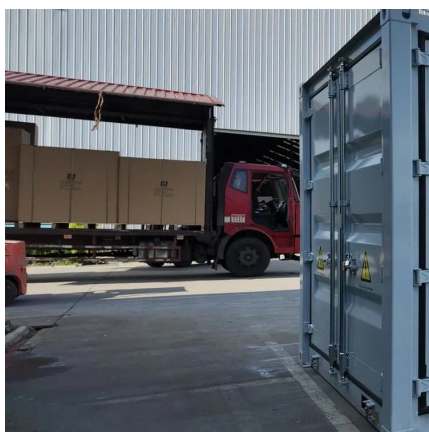
[Free Quote](#)



### [How Do You Set Up a 2000 Watt Inverter for Optimal...](#)

How Many Batteries Are Required for a 2000 Watt Inverter? The number of batteries needed depends on the desired runtime and the voltage of the battery system. For ...

[Free Quote](#)





## [2000 Watt Power Inverter: Applications, Battery ...](#)

Understanding the 2000W Power Inverter What is a 2000W Power Inverter? A 2000 watt power inverter is an electronic device that converts DC (direct current) ...

[Free Quote](#)



## [How much power does an inverter draw? - Help Centre](#)

The current draw from a 12V or 24V battery when running an inverter depends on the actual load, not the inverter size. A quick rule is to divide watts by 10 for 12V systems or 20 for 24V ...

[Free Quote](#)

## [How Many Amps Does a 2000W Inverter Draw?](#)

A 2000W power inverter is an electrical device that converts direct current (DC) from a battery (typically 12V or 24V) into alternating current (AC), the type of power used by ...

[Free Quote](#)



## [How many amps does a 2000 watt inverter ...](#)

Now that we know how much current a 2000W inverter is capable of pulling from the battery bank, we can use that to determine the size of wires and fuse or circuit breaker that we need. What gauge wire ...

[Free Quote](#)



### [How Many Amps Does a 2000 Watt Inverter Draw?](#)

But if you can't find any cable big enough to accommodate this current amount, the only option is to set the battery voltage cut-off point higher to limit the amperage draw. ...

[Free Quote](#)



### [How Many Amps Can I Get From A 2000W Inverter?](#)

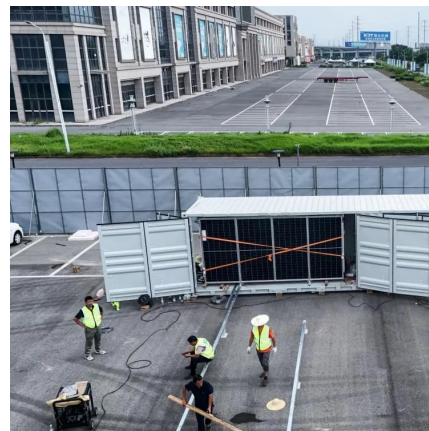
Therefore, a 2000W inverter operating at an output voltage of 120 volts may provide a maximum of 16.67 Amps of current. However, please note that the actual value of the ...

[Free Quote](#)

### [How many amps does a 2000 watt inverter ...](#)

So, in this example, the 2000W inverter could draw up to 58.8 Amps of current from the 40V battery bank when it is running at maximum output. Knowing the maximum amp draw of a 2000 Watt inverter can help ...

[Free Quote](#)



### [The 2000W Power Inverter: A Complete Guide](#)

A 2000W power inverter is an electrical device that converts direct current (DC) from a battery (typically 12V or 24V) into alternating current (AC), the type of power used by ...

[Free Quote](#)



## Contact Us

---

For catalog requests, pricing, or partnerships, please visit:  
<https://www.getonco.co.za>

### Scan QR Code for More Information



<https://www.getonco.co.za>