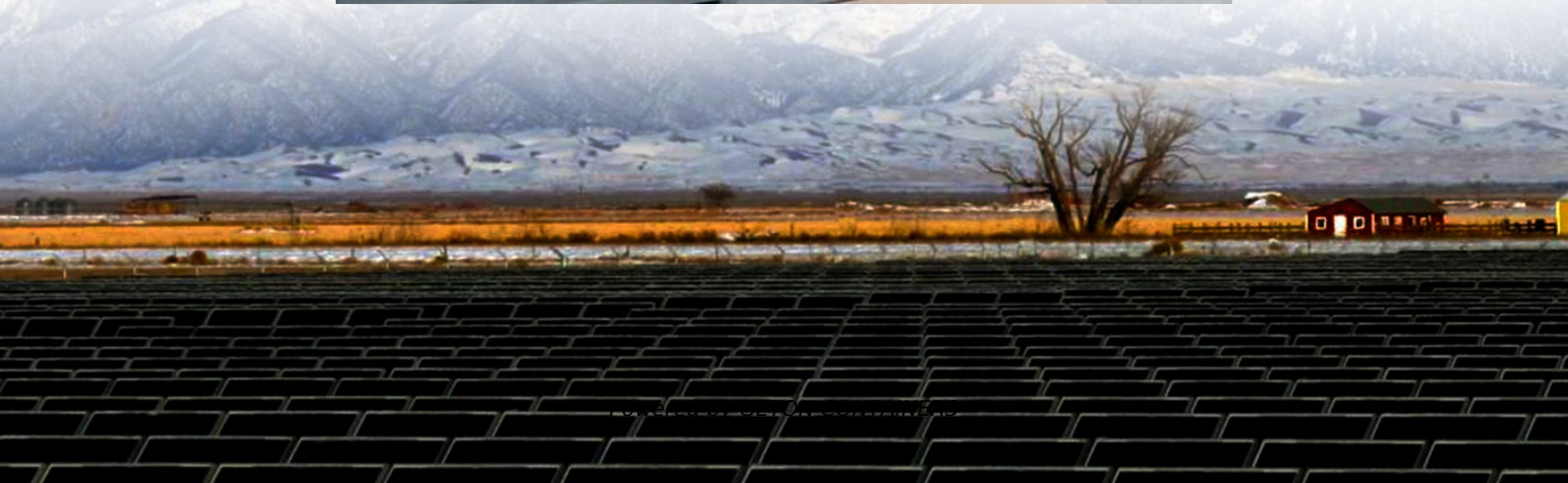


What kind of battery is used in telesolar container communication stations





What kind of battery is used in telesolar container communication s



Can a 24V 50Ah LiFePO4 battery be used in communication base stations

In conclusion, a 24V 50Ah LiFePO4 battery can definitely be used in communication base stations, especially those with lower power requirements. Its long cycle life, high energy ...

[Free Quote](#)



[Optimum sizing and configuration of electrical system for](#)

The main purpose of Battery Storage system in an electrical system of a telecommunication base station is to serve uninterrupted power supply for telecommunication ...

[Free Quote](#)

[LITHIUM BATTERY SOLAR CONTAINER PRINCIPLE FOR ...](#)

The working principle of emergency lithium-ion energy storage vehicles or megawatt-level fixed energy storage power stations is to directly convert high-power lithium-ion battery packs a?, ...

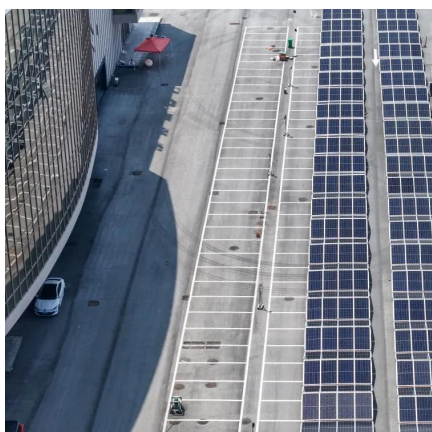
[Free Quote](#)



[Lithium battery is the winning weapon of ...](#)

With the characteristics of quick site layout and high production standardization, containerized lithium battery energy storage structure will be widely used. li-ion battery container type energy storage systems have a ...

[Free Quote](#)



[Lithium battery is the winning weapon of communication ...](#)

With the characteristics of quick site layout and high production standardization, containerized lithium battery energy storage structure will be widely used. li-ion battery ...

[Free Quote](#)



[Energy storage batteries in communication base stations](#)



Telecommunication Battery

Telecommunication battery (telecom battery), also known as telecom backup battery or telecom battery bank, primarily refer to the backup power systems used in base stations and are a core component of these ...

[Free Quote](#)



[Communication Base Station Backup Battery](#)

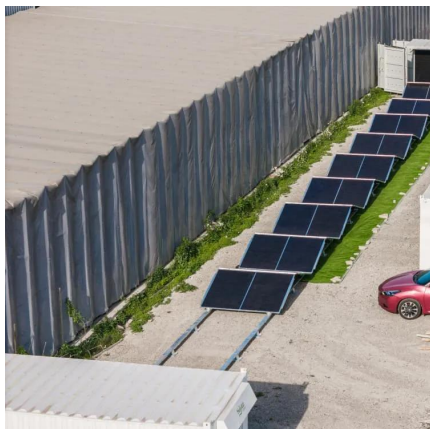
The role of the backup battery of the communication base station is mainly reflected in ensuring, maintaining, enhancing and improving the normal operation, reliability, stability and security of the communication network. ...

[Free Quote](#)



Overview Telecom base station battery is a kind of energy storage equipment dedicatedly designed to provide backup power for telecom base stations, applied to supply ...

[Free Quote](#)



[What Types of Batteries Are Used in Telecom Towers?](#)

Telecom towers rely on batteries to provide uninterrupted power for critical communication systems. Common types include lead-acid, lithium-ion, and nickel-cadmium, each offering ...

[Free Quote](#)

Telecommunication Battery

Telecommunication battery (telecom battery), also known as telecom backup battery or telecom battery bank, primarily refer to the backup power systems used in base ...

[Free Quote](#)



[Communication Base Station Backup Battery](#)

The role of the backup battery of the communication base station is mainly reflected in ensuring, maintaining, enhancing and improving the normal operation, reliability, stability and security of ...

[Free Quote](#)

[The role of solar container batteries in ...](#)



Telecom batteries play a vital role in optimizing renewable energy for base stations by storing and managing variable power, enhancing system reliability, and promoting sustainability.

[Free Quote](#)



[White Paper on Lithium Batteries for Telecom Sites](#)

Focused on the theme of "building a high-quality and reliable battery infrastructure for telecom networks", this white paper discusses the safety of lithium batteries in telecom ...

[Free Quote](#)

Contact Us

For catalog requests, pricing, or partnerships, please visit:
<https://www.getonco.co.za>

Scan QR Code for More Information



<https://www.getonco.co.za>